

Integrated Science II Midterm Study Guide

Know the following:

Chapter 1 : The Science of Biology

Lab Safety

Tools of Science

Metric Measurement

Microscope Basics

Significant Figures

- a. 2700 b. 500×10^{15} c. 0.800008 d. 0.03400×10^{16}
e. 54.000 f. 34.9×10^{24} g. 230518 h. 12.00×10^{-5}
i. 70 004 j. 1.090×10^{12}

Dimensional Analysis

No. of cm. = $(8.50 \text{ in.}) \frac{2.54 \text{ cm.}}{1 \text{ in.}} = 21.6 \text{ cm}$

Desired unit

Given unit

Chapter 5 : Populations

Chapter 6 : Humans in the Biosphere

Chapter 10 : Cell Growth and Division

Chapter 11 : Introduction to Genetics

Chapter 12 : DNA and RNA

Chapter 14 : The Human Genome

Chapter 16 : Evolution of Populations

Review

Daily Assignments Page: <http://mrskingsbioweb.com/assignments.htm>

Interactive Notebooks and PPT notes: <http://mrskingsbioweb.com/IntSciIIPPTS.htm>

Old Tests & Quizzes: <http://mrskingsbioweb.com/ExamView.htm>

Biology page: <http://mrskingsbioweb.com/Biology.html>

Genetics page: <http://mrskingsbioweb.com/Genetics.htm>

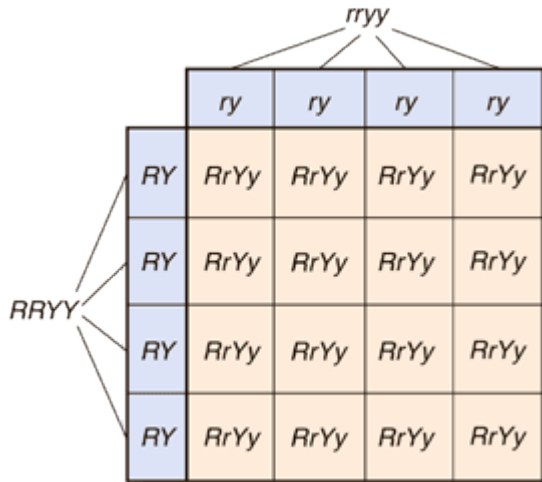
Math in Science: <http://mrskingsbioweb.com/Math.htm>

Additional Study Resource: <http://www.sparknotes.com/biology/>

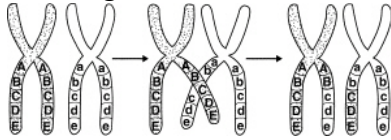
Know what these diagrams convey and be able to label them if asked

Genetics:

Punnett Squares
 Monohybrid & Dihybrid

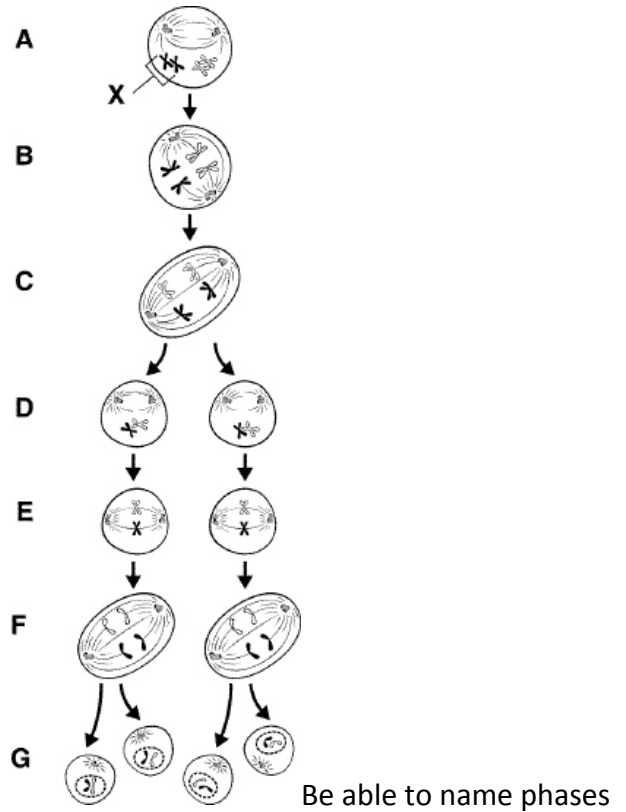
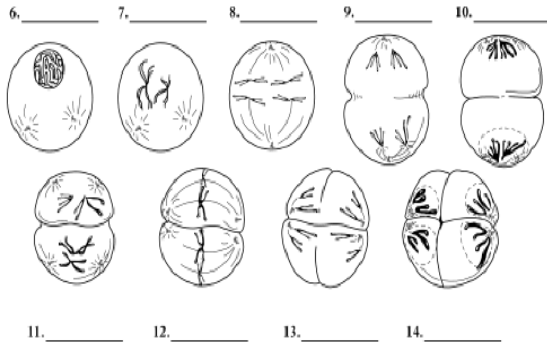


Crossing Over



Phases of Meiosis

Label the diagrams below. Use these choices: Metaphase I, Metaphase II, Interphase, Telophase I, Telophase II, Anaphase I, Anaphase II, Prophase I, Prophase II.



Gamete Formation

