


EGHS Fundraiser

Madeline Creations



Note Cards
with an Old Fashioned Flare

*Hand Drawn Originals
by Madeline*

Getting Started

Fundraiser Booklet

- Web version
- www.mrskingsbioweb.com/fundraiser.html
 - Download booklet or email link to family and friends

Recording Slip/ Order Form

Gift Boxed *Design Sets* by Madeline



Unmistakable Beauty and Craftsmanship

* Each design set comes packaged in a gift boxed set of
12 note cards with 12 envelopes
each design set has its own signature logo

Many Design sets to choose from





Table of Contents


Collection	Page
Angel Collection	37
Antique Cars	4
Beard Special Order	36
Bee & Flower Collection	5
Bird Collection I	6
Bird Collection II	7
Botanical Collection	39
Butterfly Collection	8
Butterfly / Flower Collection	9
Children's Angels / Trees	10
Christmas Collection I	10
Christmas Collection II	11
Cow / Piglets	14
Decorative Collection	12
Flower Collection I	13
Flower Collection II	14
Flower Collection III	14
Gravestone	16
Heart Collection I	15
Heart Collection II	16
Holiday Collection-USA	17
Homespun Collection	18
Hummingbird Collection	18
Hummer Collection	19
Hummingbird / Birth Month	19
Madeline's Collection	38
Prize Collection	32
Praise Collection I	20
Praise Collection II	21
Praise Collection III	22
Praise Collection IV	23
Praise Collection V	24
Praise Collection VI	25
Praise Collection VII	26
Praise Collection VIII	27
Prize / Amphibian Collection	28
School Emblem	30
Sea Life Collection	29
Sea Mammal Collection	30
Wild Duck Collection	31
Contact Information	40

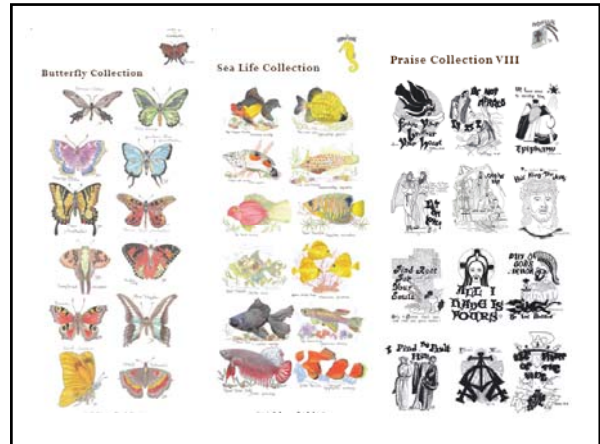
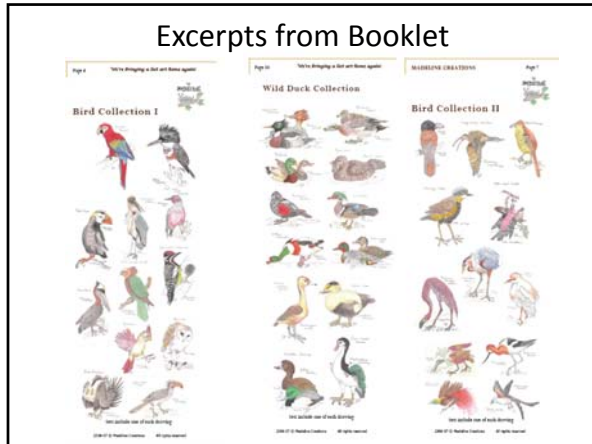
Special School Emblem

Custom Design Just for EGHS



*Hand Drawn Originals
by Madeline*





Sell to ideas...

- Parents
- Grandparents
- Aunts, Uncles, etc.
- Friends of family
- Parent's co-workers
- Neighbors
- Businesses
- Dentist
- Doctor
- Coach
- Youth group leaders
- Teachers

Collect Payment

- Cash or Check
- Write checks payable to EGHS
- Collect payment at time order is placed
- Bring all payments to teacher on daily basis

Contact Person

Mrs. King
Eau Gallie High School
Room 37-100
(321) 242-6400 x 5700

email: king.kristin@brevardschools.org
web: www.mrskingsbioweb.com/fundraiser.html