

Welcome to Biology

2010-2011

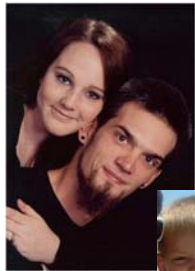


Mrs. King
37-100

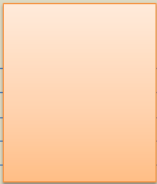
Biology Course Objectives

- To gain a better understanding of our planet
- To utilize the **scientific method** to explore and understand science topics
 - biochemistry, energy, earth processes, life processes and the environment
- The successful completion of the midterm and End of Course Exams (EOC).

About Me



5 x 8 note card assignment

Your Name	Class/period:	
Email:		
Internet access/skill:		
Band/Sports?		
Do you work? Where?		
Hobbies:		
About you:		
Write a paragraph or two about yourself so I can get to know you better		

Tape a photo of yourself in top right corner

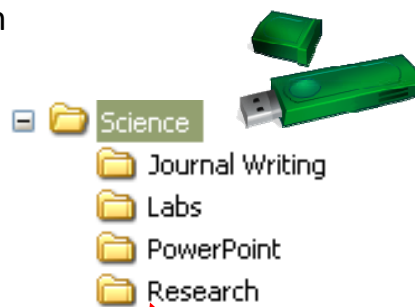
Supply List

- **Flash drive** for computer work done in science class
 - Staples has 4G flash drives for \$4.99
- 3-ring binder (2" or 3")
 - AVID students may use AVID binder
- 1 Spiral notebook (8.5 x 11)
- Notebook dividers
- College ruled notebook paper
- Zipper pouch for 3 ring binder
 - Sticky notes
 - Highlighter
 - Black or blue ink pen
 - pencils (mechanical okay)

Positive Attitude & Eagerness to Learn

Computer / Flash Drive Hints

- Set up a folder on your flash drive for science
 - Organize sub-folders within your science folder
- **Back up** your work on your flash drive before leaving class/logging off
- Naming files submitted as assignment: *last name.period*
 - ex: **Jones.p3**
 - **very important!!!**

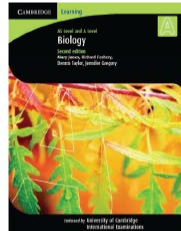


You won't lose or forget where you saved your work this way

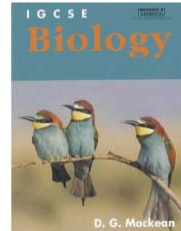
Other Materials

Text Book Used

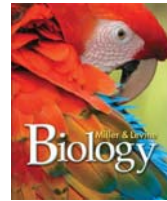
- Check out
 - Biology Honors textbook from library
 - AICE & Pre-AICE textbooks from Mrs. King
- New Student Packet
 - Newsletter, student information sheet, safety agreement, Honor code
 - Online/daily assignment page, August 10



AICE Biology



Pre-AICE Biology



Biology Honors

2011 – 2012
School Year

Mrs. King's Science Newsletter

www.mrskingbioweb.com

Welcome to Eau Gallie High School

An exciting adventure awaits as once again we move into a fresh new school year. So that each student experiences success, it is imperative that everyone understand the course requirements and each student abides by school, class and laboratory safety guidelines at all times. I have high expectations for each student as they must meet requirements set forth by the county and state in order to go on to the next level of science. Primarily, each student must put forth effort to be successful in biology.

Our Classroom Policies

- Excellence is Expected!
- Student participation is required.
- Treat everyone respectfully at all times.
- Food and drinks are **NOT** permitted in science class/lab for safety reasons.
- Stay in your assigned seat.
- Raise your hand for comments and questions
- Please don't interrupt.
- Arrive on time and always come to class prepared with paper, pencil and textbook, ready to do work.

AICE Biology, Pre-AICE Biology & Biology I Honors

Volume 9, Issue 1

Class Schedule

•••••	Biology Honors	1
•••••	Biology Honors	2
•••••	Planning	3
•••••	AICE Biology	4
•••••	Pre-AICE Biology	5
•••••	Pre-AICE Biology	6
•••••	Biology Honors	7

Let's have a great year!

Explore, Empower, Engage

Remember... There's never a dumb question!

All students must maintain at least a "C" average and remain in good standing to qualify for field trips.

What We Do In Science

- Collaboration
- Inquiry Labs/Practicals
- Research
- Dissections
- Presentations/Symposiums
- Technology
- Interactive Notebooks
- Journaling
- Formative Assessment

Supply list posted online

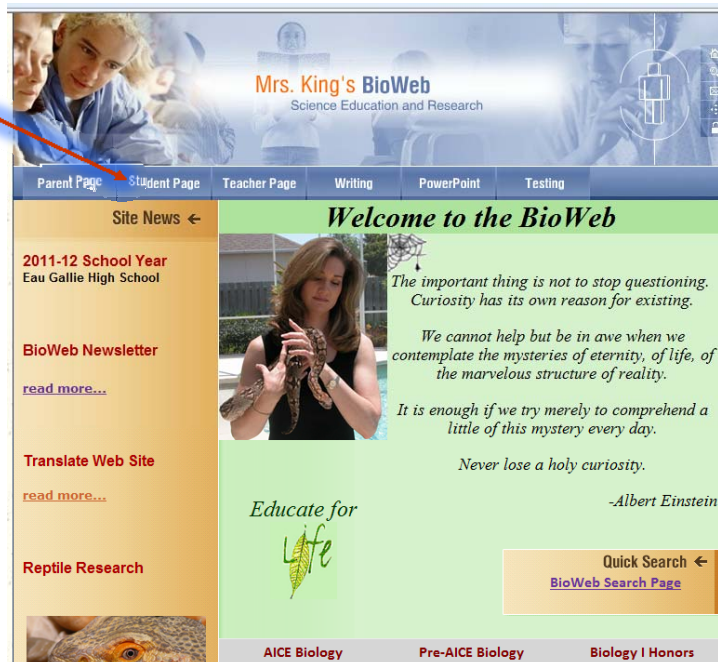
Learn to Navigate the BioWeb Website

*AICE Biology, Pre-AICE Biology &
Biology Honors*

mrskingsbioweb.com



Click
here



[Home](#) [Feedback](#) [BioWeb Contents](#) [Search](#)

Student Resources

[Supply List](#)
 Contact [Mrs. King](#)
[Translate web site to another language](#)

AICE Biology (A5)

- # [Syllabus & Course Handout](#)
- # [Daily Assignments](#)
- # [Lecture Notes](#)
- # [Online Testing](#)
- # [Textbook](#)
- # [Cambridge Student Website](#)

Pre-AICE Biology (IGCSE)

- # [Syllabus](#)
- # [Daily Assignments](#)
- # [Portfolio Requirements](#)
- # [Lecture Notes](#)
- # [Online Testing](#)
- # [Textbook](#)
- # [Cambridge Student Website](#)

Biology Honors

- # [Syllabus](#)
- # [Daily Assignments](#)
- # [Portfolio Requirements](#)
- # [Lecture Notes](#)
- # [Labs & Lab Photos](#)
- # [Online Testing](#)
- # [Textbook](#)

[Virtual Instruction in Brevard](#)
Study Hall
[Makeup Work & Missed Labs](#)

Please don't wait until you are failing before you ask for help. By then, the subject matter may be too overwhelming to comprehend.

Click links for easy access

Scroll down for more info

Today's Assignment

Monday	Tuesday	Friday
<p>2 Teachers Report</p> <p>9</p> <p>Class Introduction</p> <ul style="list-style-type: none"> # Course Policies & Objectives # Note card # Supply List # Student Information Sheet # Website Navigation # Issue textbook codes <p>Homework</p> <ul style="list-style-type: none"> # Read Science Safety Guidelines # Safety Agreement # Honors Code of Ethics <p>* items due Wednesday/ print and sign</p> <p>16</p> <p>Observation & Experiment</p> <ul style="list-style-type: none"> # Read p. 19-20 BioZone workbook answer questions 1 and 2 	<p>3</p> <p>10</p> <p>Introduction to 4</p> <ul style="list-style-type: none"> # PPT <p>Safety Activity</p> <ul style="list-style-type: none"> # Map/floor pla # Label all equip # Map evacuatio <p>SCRI2N.1.1</p> <p>17</p> <p>Measurement</p> <ul style="list-style-type: none"> # Metrics # Tools of Scie 	<p>6</p> <p>13</p> <p>Notebooks Safety Quiz</p> <p>Writing in Science</p> <ul style="list-style-type: none"> # Reading and report requirements # APA Documentation, citing and listing references # Lab Reporting <p>Left side</p> <p>SCRI2N.2.3, SCRI2N.2.4, SCRI2N.2.5</p> <p>20</p> <p>Graphing</p> <ul style="list-style-type: none"> # Units # Approximation of P...

9

Class Introduction

- # [Course Policies & Objectives](#)
- # [Note card](#)
- # [Supply List](#)
- # [*Student Information Sheet](#)
- # [Website Navigation](#)
- # [Issue textbook codes](#)

Homework

- # Read [Science Safety Guidelines](#)
- # [*Safety Agreement](#)
- # [*Honors Code of Ethics](#)

* items due Wednesday/ print and sign

Online Textbook Resource



- Link on website to Biology textbook
 - Practice quizzes
 - Extra resources

Resolving Discipline Issues

Detention with ME

- Eating/Drinking
 - Bottled water OK, but nothing else
 - **Never** during lab!!!!!!
- Talking w/o permission
- Disruption of class – my discretion
- Tardy w/o pass
 - 10 min or more = Dean's referral/out of area
- Throwing objects in class
- Horseplay
- Writing on desk/lab station/walls

Referral to DEAN

- Dress code violations
- Cell phone usage
- Skipping class
- Profanity
- Insubordination *aka* Disrespect to Teacher
- Cruelty to others
 - **Bullying, etc.**
 - **Hitting (Play or Real)**
- Vandalism & Theft

***Failure to serve detention will result in a dean's referral**

Consider this fair warning

Electronics/Cell Phone Policy

Strictly Enforced

- Cell phones, iPods, etc. are not permitted *during* school hours
- Phones must be **turned off** and kept out of sight
 - **OFF**, not vibrate
- Texting and/or checking phone during or between class is prohibited
- **All Visible Items will be immediately confiscated**
 - Submitted to front office
 - Parent pick up



[EGHS Policy](#)

Dress Code Policy

Strictly Enforced

- General Guidelines
- Headgear
- Hair
- Upper & Lower Garments
- Footwear
- Students found in violation of the EGHS Dress Code will be referred to the Dean's Office and may face disciplinary action.
- Offenders will be directed to change into acceptable attire. If necessary, parents will be contacted to bring appropriate clothing for the student to wear.
- Repeated offenses will be viewed as willful disobedience and may result in suspension.
- [EGHS Policy](#) (keep copy in notebook)

Things to Remember



Be Courteous and Respectful

- Always treat everyone with respect
- Don't interrupt...
 - *Be Polite*
 - *Raise Your Hand*
 - *Wait to be called on*
- Take care of equipment
- Clean up after yourself!!!!!!!!!!!!!!



No Horseplay !!!!!

- Pronunciation: \hòrs-plā\
• Function: *noun*
• rough or boisterous play



- Never Tolerated

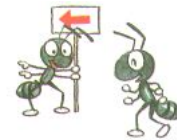
- Dangerous in this type of class setting

No Food or Drink in Science Classroom



Spilled food & drinks

invite 



unwanted visitors...

Also **unsafe** in lab



Hall Passes



- **Class time is important.**
 - Take care of personal business between classes.
 - Manage your time wisely!
- Student must sign log/clip board
 - Dated with time out and time in.
 - must have teacher ID hall pass
- No more than one student out of the room at a time
- No passes first 5 minutes and last 5 minutes of class

Passes given at my discretion

Attendance

- **Good attendance is a must in science**
- **Attendance is taken from a seating chart**
 - If you are not in your assigned seat you will be marked absent
- **Research Shows**
 - Direct correlation between good attendance and success in science class

Tardy

- Each student is to be in his/her assigned seat by the time the final bell rings, **quiet** and **ready to work**.
- Students standing in the hall will be considered tardy.

4 tardies = 30 minutes of after school detention with Mrs. King

... No Exceptions

Daily Science Journal/ Bell Work

Date each entry

Example

- Write question out fully
 - Answer question
- 1 point per question/day
- *This should take you no more than 5 minutes at the beginning of class*

Your Name

Monday, 8/15/11

Write question... Answer the question in a paragraph format, draw a diagram, or complete a table...

Tuesday, 8/16/11

Answer the question.....

And so on.

Lab Participation

- Assigned lab stations
- Responsibility
 - Safety
 - Cleanliness
 - Equipment
 - Materials
- *Lab time is not play time*



Everyone must cooperate and work as a TEAM

Late Assignments ????

- Any assignment turned in after **3:45 PM** on due date will be considered late.
 - No more than 1/2 credit will ever be given for late assignments
 - Work 2 or more weeks late will NOT be graded

Extra Credit

- Extra credit opportunities are given twice a year:
 - end of 1st semester
 - end of 2nd semester
- Check website for details

Grading

- Grades determined by point system
- Points calculated from
 - Projects & Teamwork
 - Homework
 - Lab Reports
 - Quizzes
 - Chapter Tests
 - Semester Exams

Calculate Points

$(\text{points earned} / \text{total possible points}) \times 100 = \% \text{ grade}$

- **A= 100-90**
- **B= 89-80**
- **C= 79-70**
- **D= 69-60**
- **F= 59 or below**

Grades posted on online: Edline.net

Science Success

- Be in School
- Turn in all your assignments on time!
- Read your textbook
- KNOW the syllabus
- Study!



It is the **responsibility**
of each student
to acquire, complete and return
any missed assignments due to
absences.

Check www.mrskingsbioweb.com regularly
for assignments and due dates

Study Hall

Tuesday

3:30 PM to 4:00 PM



**Alternative times only available with prior
arrangements*

**Please don't wait until you are failing before you
ask for help.**

**By then, the subject matter may be too
overwhelming to comprehend.**



Schedule & Contact Info

- 1 Biology Honors
- 2 Biology Honors
- 3 **Planning**
- 4 AICE Biology
- 5 Pre-AICE Biology
- 6 Pre-AICE Biology
- 7 Biology Honors

Mrs. King

*BS Biology, MBA Human Resources,
M.Ed. Educational Leadership*

(321) 242-6400 x 5700

king.kristin@brevardschools.org

mrskingsbioweb.com

