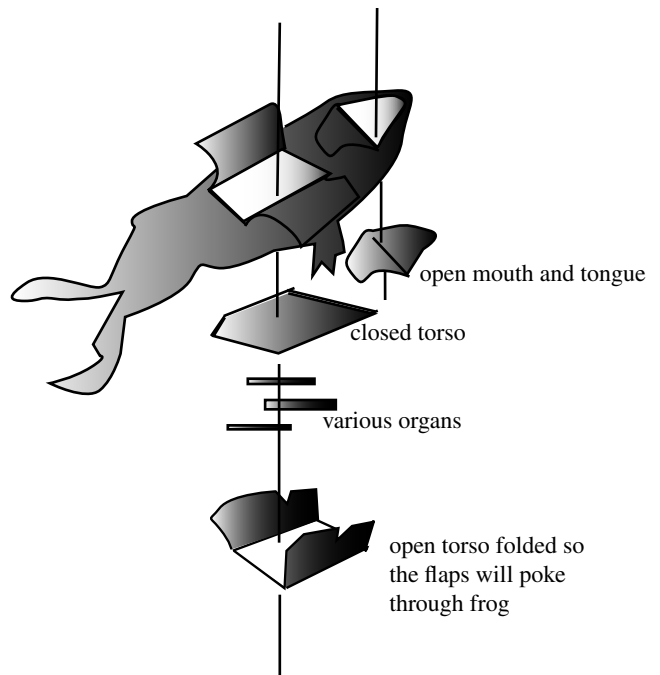
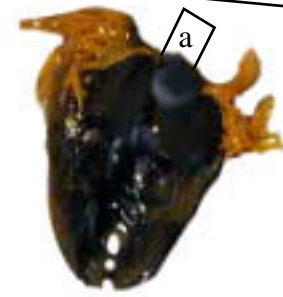
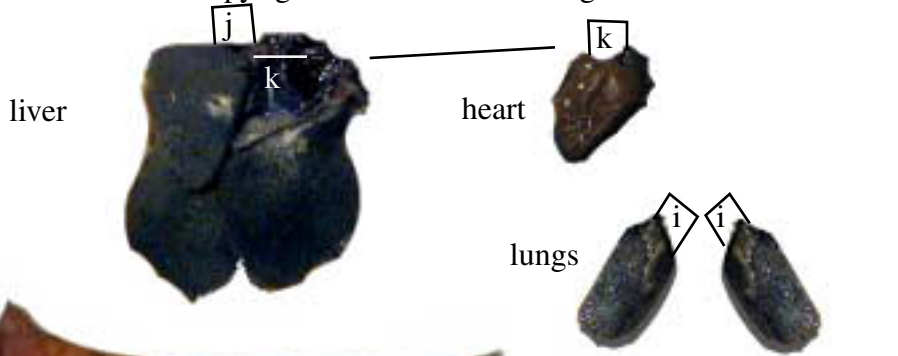
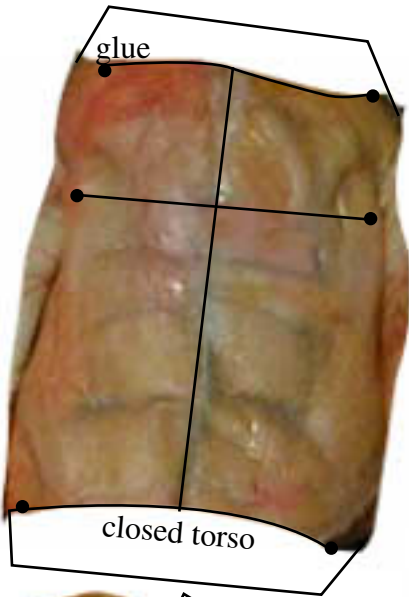


This is the Froguts cut-out. It will allow you to build a model of an actual frog (only a little flatter). You may use this free of charge and photocopy it for classroom or instructional use.

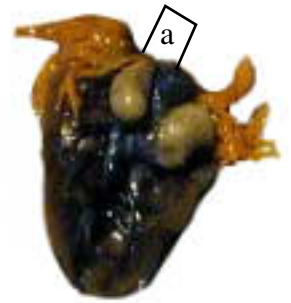
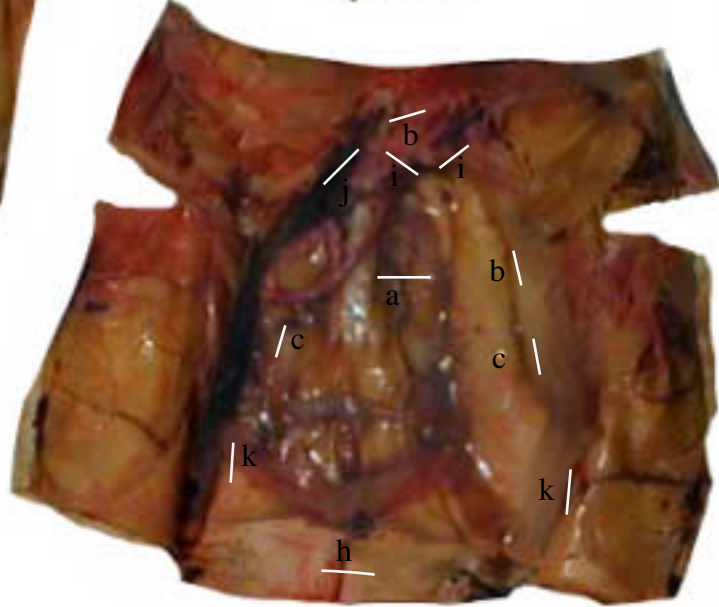
Instructions: Carefully cut along the edges around the frog, then cut the dark lines to open the frog. On the next sheet cut out the organs and torsos and tab or glue them in place. If the sheets are copied in black and white, they may be colored first as an activity.

*You can use froguts.com to help you place the organs.



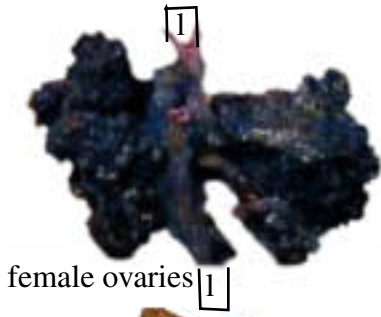


female kidney and spleen
*use only with ovaries/oviducts

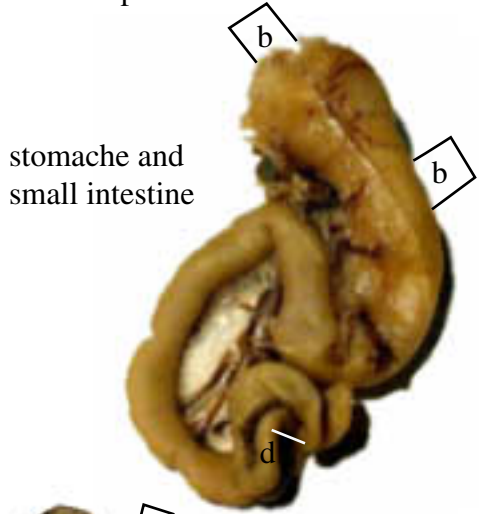


male kidney and testes

open torso and flaps



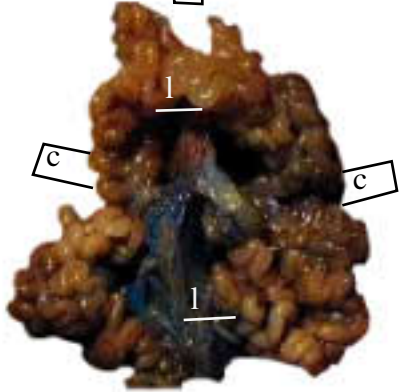
female ovaries



stomach and small intestine



open mouth and tongue
fold in half and glue on under head
fold the tongue in to show how it works



female oviducts



large intestine

these 2 are actually connected together into one long tube, so they need to be glued together,



bladder



fat bodies